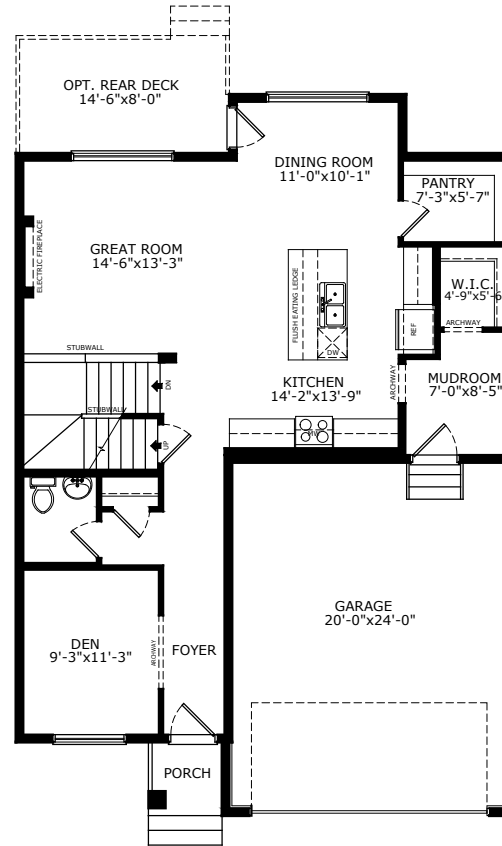
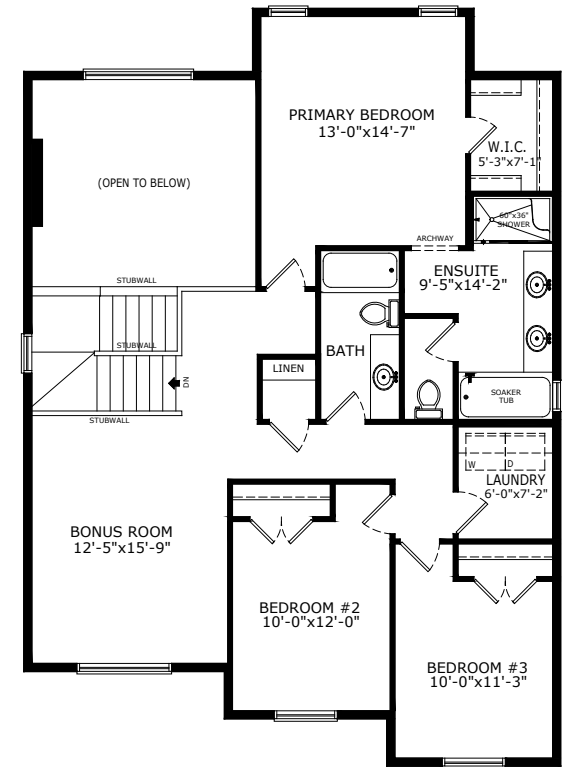


2228 SQ FT
3 BEDS
2.5 BATHS

BRIAR



MAIN: 1041 SQ FT



UPPER: 1187 SQ FT

Sterling HOMES

A QUALICO Company

ELEVATIONS



CRAFTSMAN



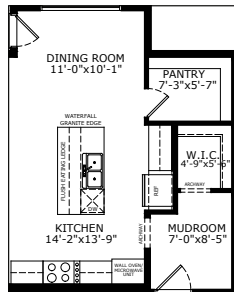
PRAIRIE



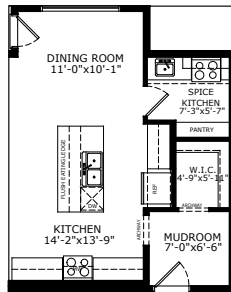
FARMHOUSE

MAIN FLOOR OPTIONS

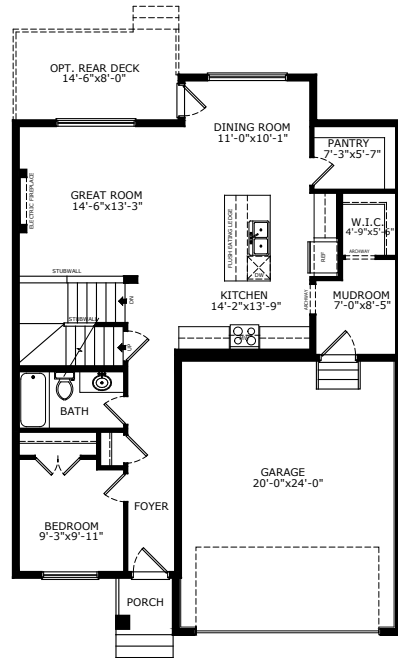
OPTIONAL EXECUTIVE KITCHEN



OPTIONAL SPICE KITCHEN

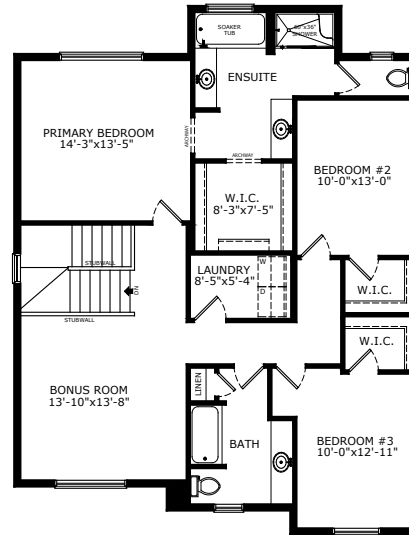


OPTIONAL MAIN FLOOR WITH FULL BATH & BEDROOM

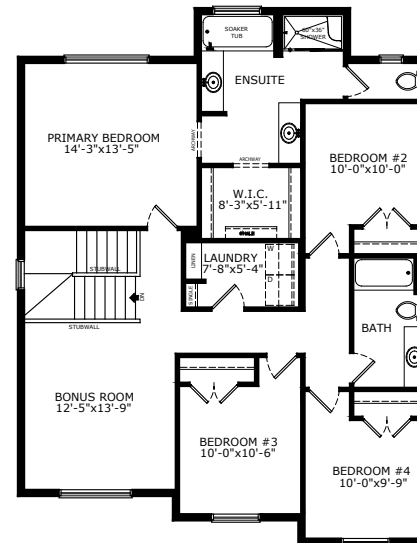


UPPER FLOOR OPTIONS

OPTIONAL 3 BEDROOMS

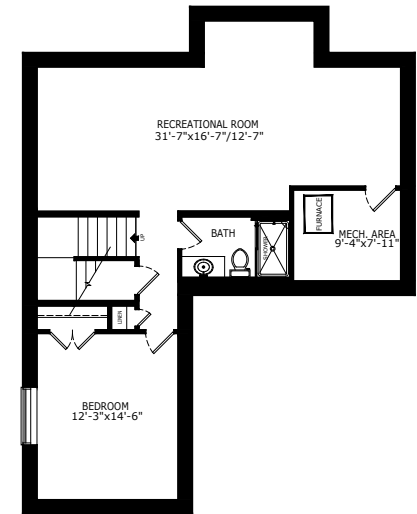


OPTIONAL 4 BEDROOMS

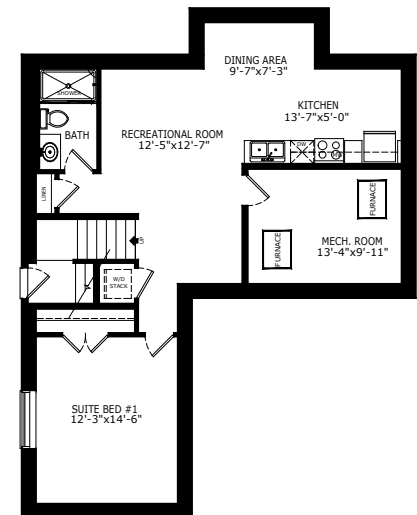


BASEMENT OPTIONS

STANDARD 790 SQ FT



1 BEDROOM 'LEGAL SUITE' 581 SQ FT



Scan here for floorplan options and more

*Legal Suite availability varies by community and municipal regulations.

Build Your Life

STERLINGCALGARY.COM